



ruban plié

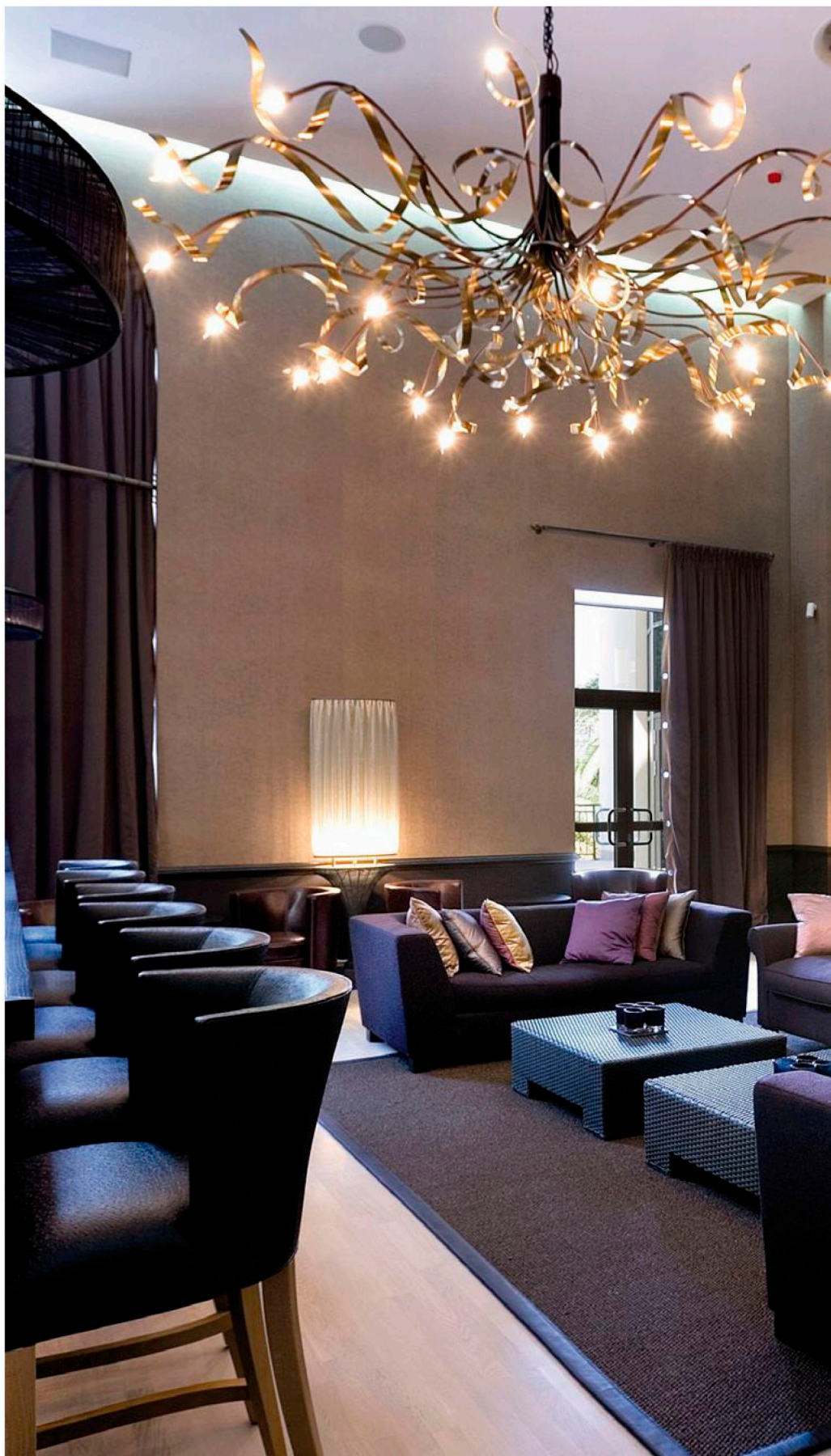
ceiling lamp

chandelier round

chandelier oval

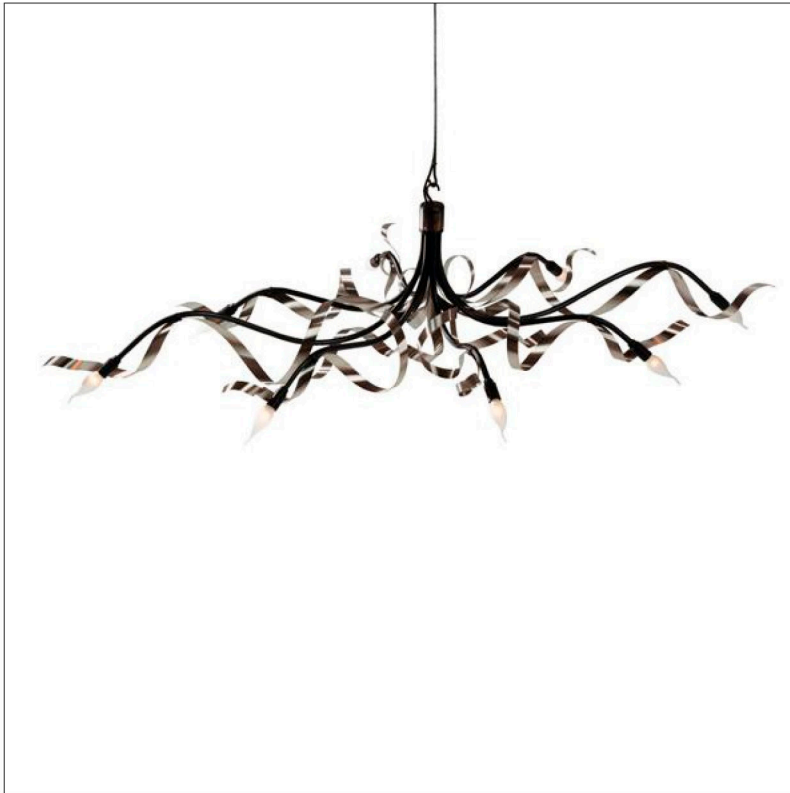
ruban plié

The Ruban plié is a contemporary version of a nostalgic chandelier. This charming and transparent fixture is created in a revived Art Nouveau style. It is available in many different forms and finishes. For example: brass, stainless steel or powder coated steel. Each piece is unique and hand-crafted with great attention to detail.



ruban pli 

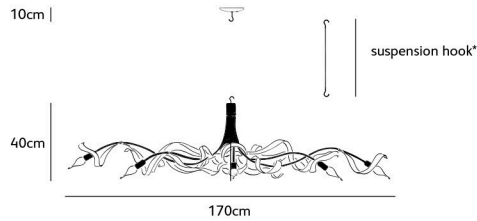
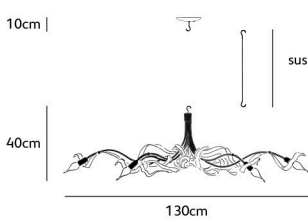
chandelier oval



colors & materials



RP.08.CH.ST.O



Order code	RP.06.CH.*.O
Dimensions	
Wxdxh	135x75x40cm
Hook	customized*
Ceiling cover	10cm
Light source	not included
Lampholder	E14
	Max. 6 x 40W / 240V
Weight	
Net. weight	5kg

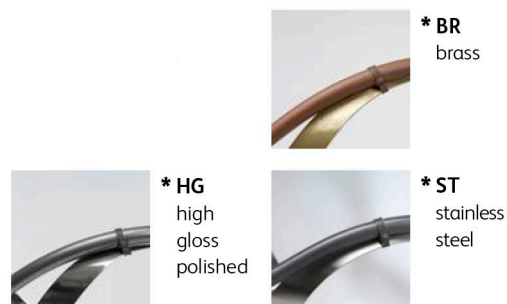
Order code	RP.08.CH.*.O
Dimensions	
Wxdxh	170x100x40cm
Hook	customized*
Ceiling cover	10cm
Light source	not included
Lampholder	E14
	Max. 8 x 40W / 240V
Weight	
Net. weight	7kg

ruban plié

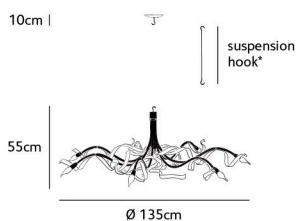
chandelier round



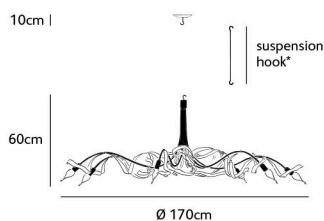
colors & materials



RP.07.CH.170.HG.R



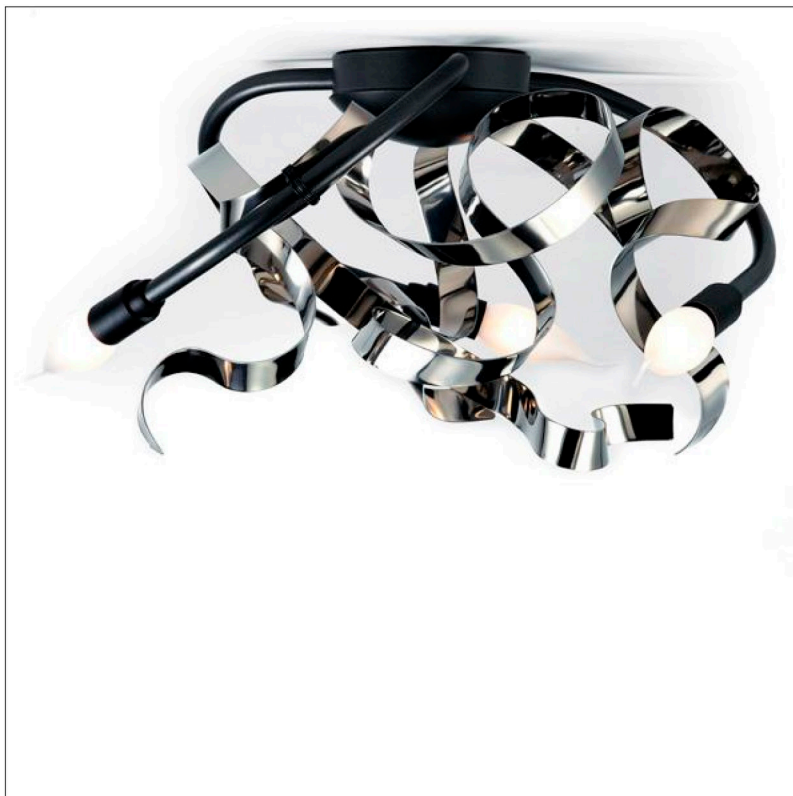
Order code	RP.05.CH.135.*.R
Dimensions	
Øxh	135x55cm
Hook	customized*
Ceiling cover	10cm
Light source	not included
Lampholder	
E14	
Max. 5 x 40W / 240V	
Weight	
Net. weight	7kg



Order code	RP.07.CH.170.*.R
Dimensions	
Øxh	170x60cm
Hook	customized*
Ceiling cover	10cm
Light source	not included
Lampholder	
E14	
Max. 7 x 40W / 240V	
Weight	
Net. weight	8kg

ruban pli 

ceiling lamp



colors & materials



* BR
brass

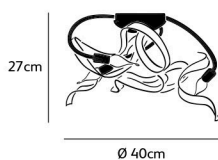


* HG
high
gloss
polished



* ST
stainless
steel

RP.03.CE.HG



Order code

RP.03.CE.*

Dimensions

Øxh **40x27cm**

Light source **not included**

Lampholder

E14

Max. 3 x 40W / 240V

Weight

Net. weight **3kg**

IP 20   